



Campus Training

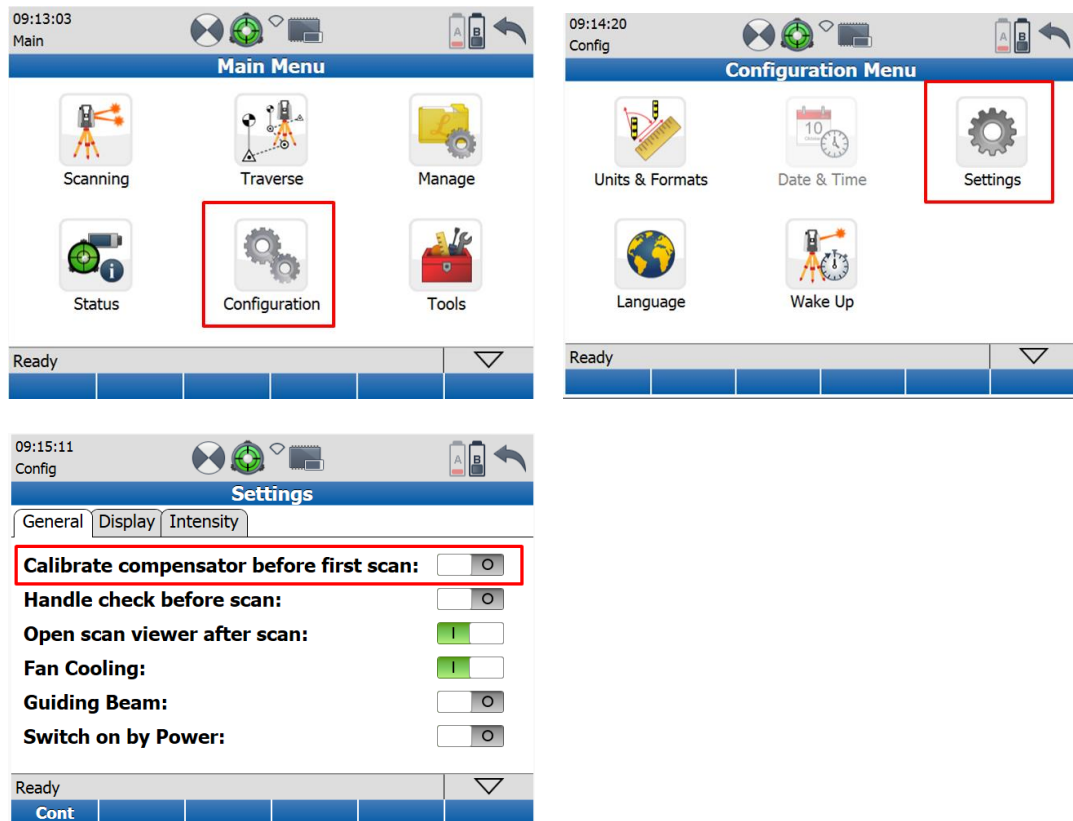
Pxx Settings after firmware update

This document describes how to change of the most important settings of your Pxx scanner as suggested by HDS support Benelux.

- **Uncheck the automatic tilt compensator calibration**

By default the scanner will start a tilt compensator calibration just before the first scan when the scanner was just booted. Preferably this calibration is only done in very stable circumstances and not in the field.

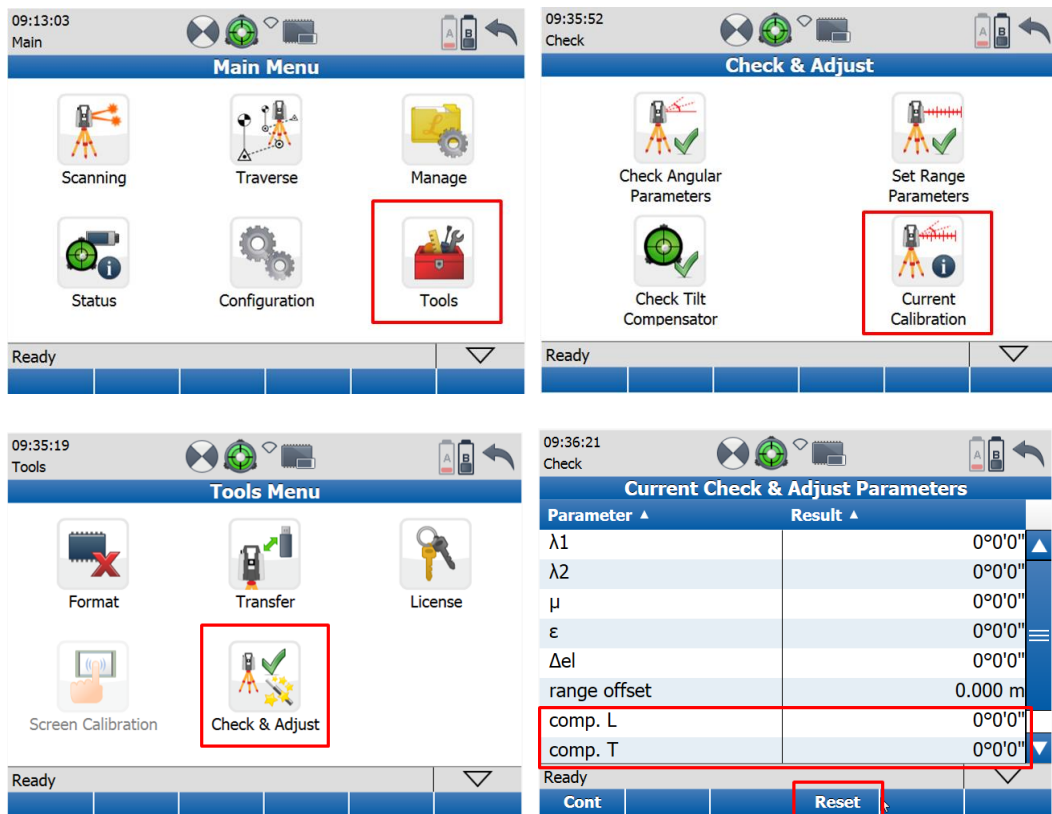
We suggest to switch off this setting.



- **Reset calibration values if scanner was already started once with the automatic calibration setting**

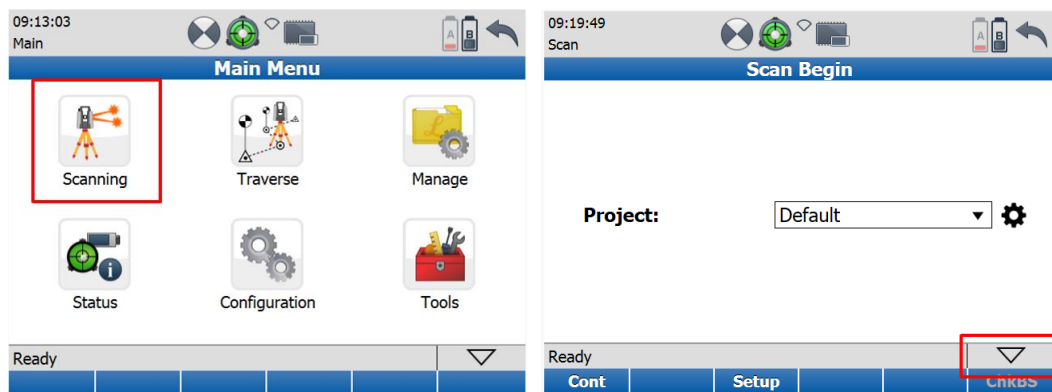
If the scanner was already used with the above setting for the automatic calibration, it might be that the scanner has stored some internal calibration offsets which will be applied to all future scans. Since it is not sure if the calibration was done in a stable environment, we recommend to reset these values.

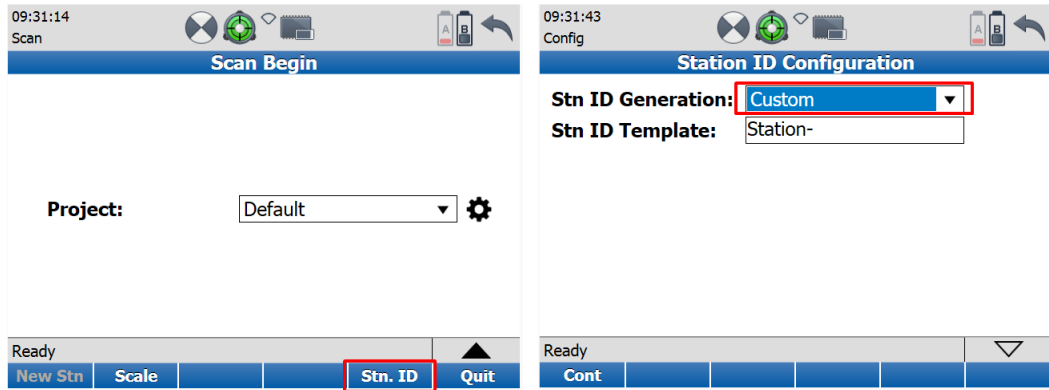
!! If the calibration was done in a stable environment, you can leave the values as they are.



- **Show dialog when creating a new station**

By default the scanner will now automatically create a new station when clicking the start button and when there already is scan data in the current station. We suggest to set this to 'custom' so that the scanner shows an intermediate screen when it will create a new station. This way, the user can decide if he wants to create a new station or if he wants to add some more scans to the previous station.





- **Compensator should stop when compensator goes out of range**

By default the scanner is set to continue the scan even when the compensator goes out of range. The scanner will show a message when the scan is finished to indicate that the scanner went out of compensation range. But the data captured at that point is not compensated anymore.

In order to have the scanner stop the scan when it goes out of compensation range, you need to change a setting.

