

# CloudWorx Suite 2023.1.0 Release Notes



## Leica Geosystems

### Release Notes

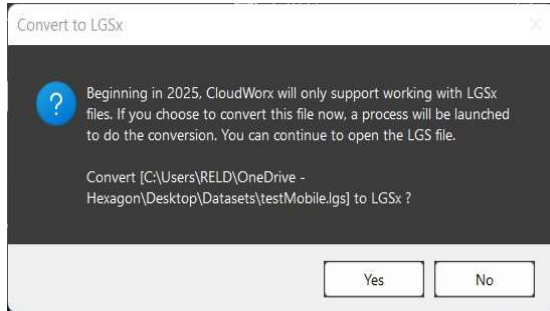
<b>Product</b>	<b>CloudWorx Suite 2023.1.0 Release Notes</b>
<b>Date</b>	<b>December 13, 2023</b>
<b>Developed by</b>	<b>Reality Capture Software Product Management</b>

#### What's New

- New Data Architecture for Reality Capture Applications (**LGSx**)
- For this release, a new data architecture has been implemented at the core of our Reality Capture software products and our popular file format, the LGS file. The update provides a next-generation solution for our Leica Reality Capture data and includes faster writing (publishing), higher compression, and new core architecture that will allow us to build out new capabilities and features to meet your growing needs, like file versioning (i.e. Track changes to GeoTags, markups, etc.), in the future. There is a change to the LGS format as part of the new data architecture. The new format, called LGSx, will contain the new data architecture and will not be compatible with versions of Reality Capture software older than 2023.1.0 (this release).
- Users are welcome to use the Leica LGS Converter Tool (part of 2023.1.0 release) for converting LGS file(s) to LGSx file(s) and save them directly to the user-selected directory location.  
**Note 1:** No license is needed to run the LGS Converter Tool

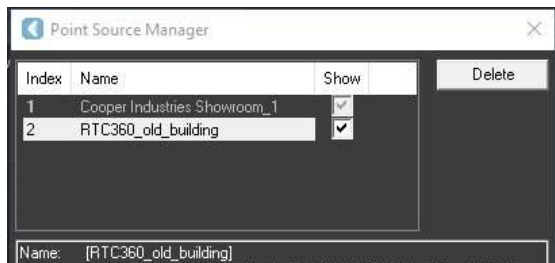
## New Features (Common to all CloudWorx Plugins)

- In-App LGSx converter (parallel conversion to the same location of the original dataset)



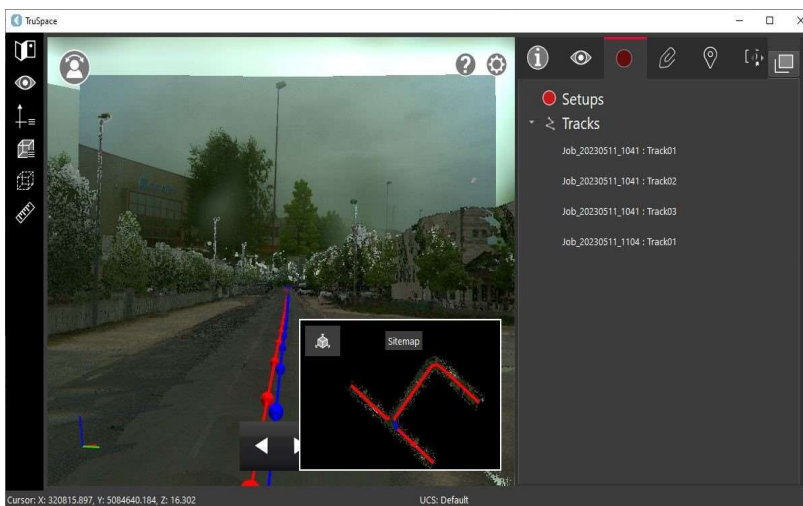
In-App prompt to initiate LGSx conversion

- A dialog for supporting multiple point cloud sources is now available on all the plugin



Point Source Manager

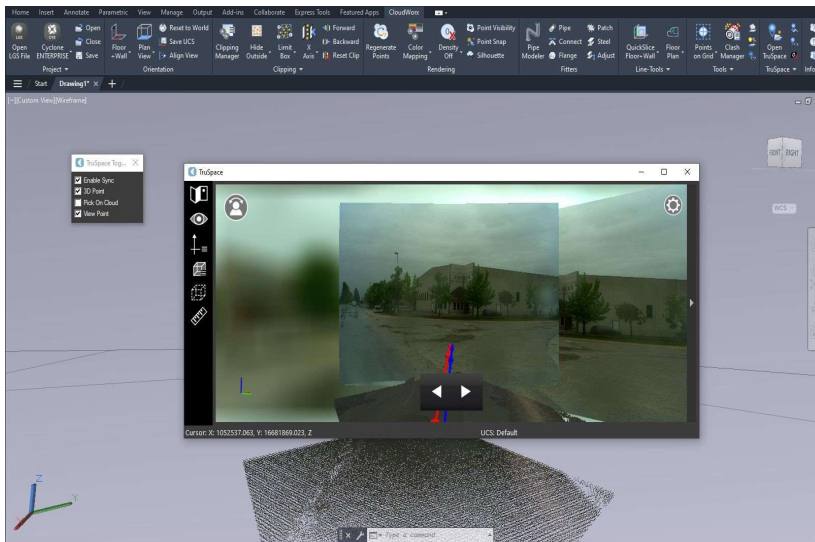
- Support for handling cube images for waypoints (Mobile setups aka Tracks)



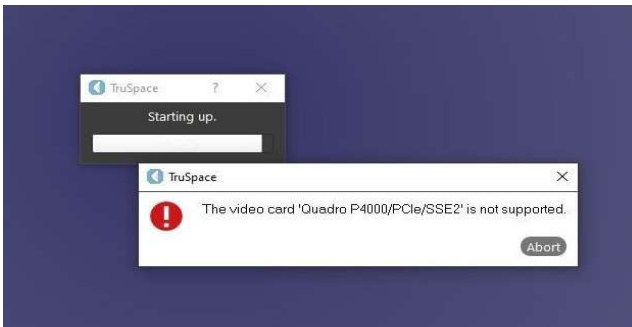
- Add support for Clip-by-Time in TruSpace (Mobile tracks)



Create a clip by time (seconds)



- Detect automatically graphic (video) card on the host machine



A warning message that the video card is not supported

## Deprecated Features

Leica Geosystems strives to provide support for the widest array of operating systems and file formats possible as is reasonable given current technologies and support from third-party partners.

With each release, we review our list of currently supported formats and operating systems in line with industry trends and announce product terminations.

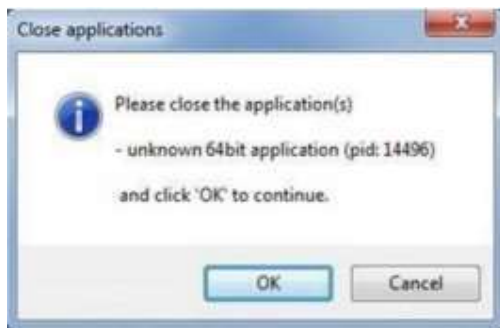
Leica Geosystems may add or terminate support for a file format during any release. Obsolete operating systems will be supported for six months after their announced termination or the next major software release, whichever comes first. Server products will be supported in alignment with Leica's Client License Manager (CLM) supported servers to guard users against incompatibility.

CloudWorx 2023.1 Suite:

- All LGS files imported into the product will be converted to LGSx format by user's selection (optional). After conversion that will perform in the background, the new LGSx file will be stored at the same location of the original LGS file.

## CLM Licensing Information

Installing CLM while the JetStream service is running - During installation of CLM, users may encounter the following error message:



This is commonly due to a service like JetStream running in the background.

To enable the successful installation of CLM, please follow these steps:

- Launch the task manager
- Select the Services tab
- Look up the process with the PID (Process ID) shown in the Close applications dialog
- In this case it is JetStream
- Terminate the process so that CLM can be installed
- After CLM is installed, click on the Services button in the Task Manager, and restart the service

**Note 2:** A general CLM license compatibility support fix is included.

**Note 3:** All users with a currently valid CCP (Customer Care Package), or with CCP valid as late as 1 January 2023, can run this new version with no new license required.

## CloudWorx for SOLIDWORKS 2023.1.0 Release Notes



### New Features and Improvements

- None
- 

### Fixed Issues

- None
- 

### Known Issues

- This is the last CloudWorx for SOLIDWORKS release
-